



ENROLLMENT GROWTH STRATEGY

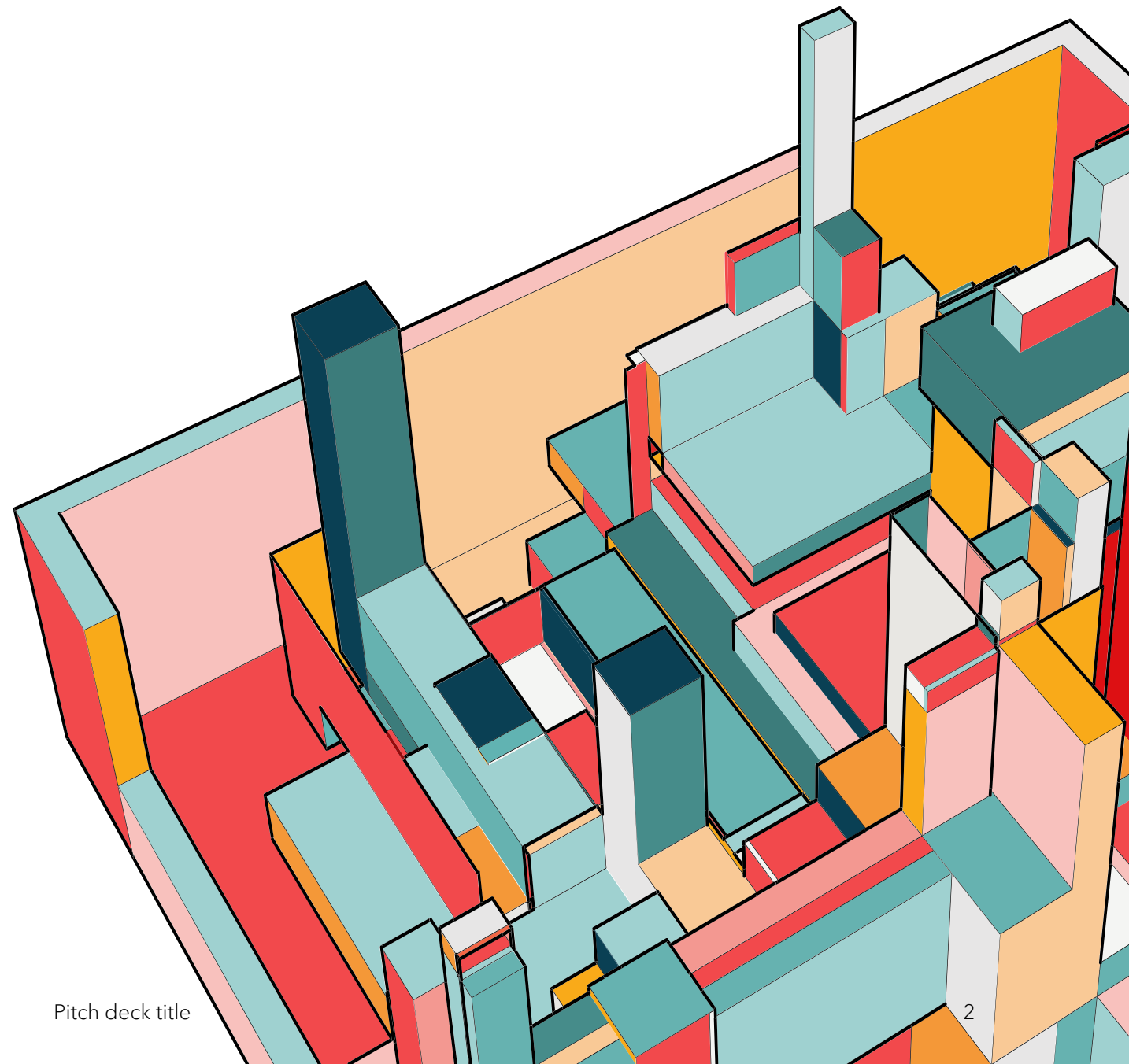
AESD 2023

UNPRECEDENTED GROWTH

AESD has experienced unprecedented growth over the past year. To date there are over **1550** more students than September 2021. The present enrolment is **18,373** students.

District schools are full to overcrowded. The reality is that new schools are 5 to 10 years away at a minimum.

The following presentation outlines possible measures to be considered as interim long-term solutions to the tremendous growth in student population in Anglophone East.

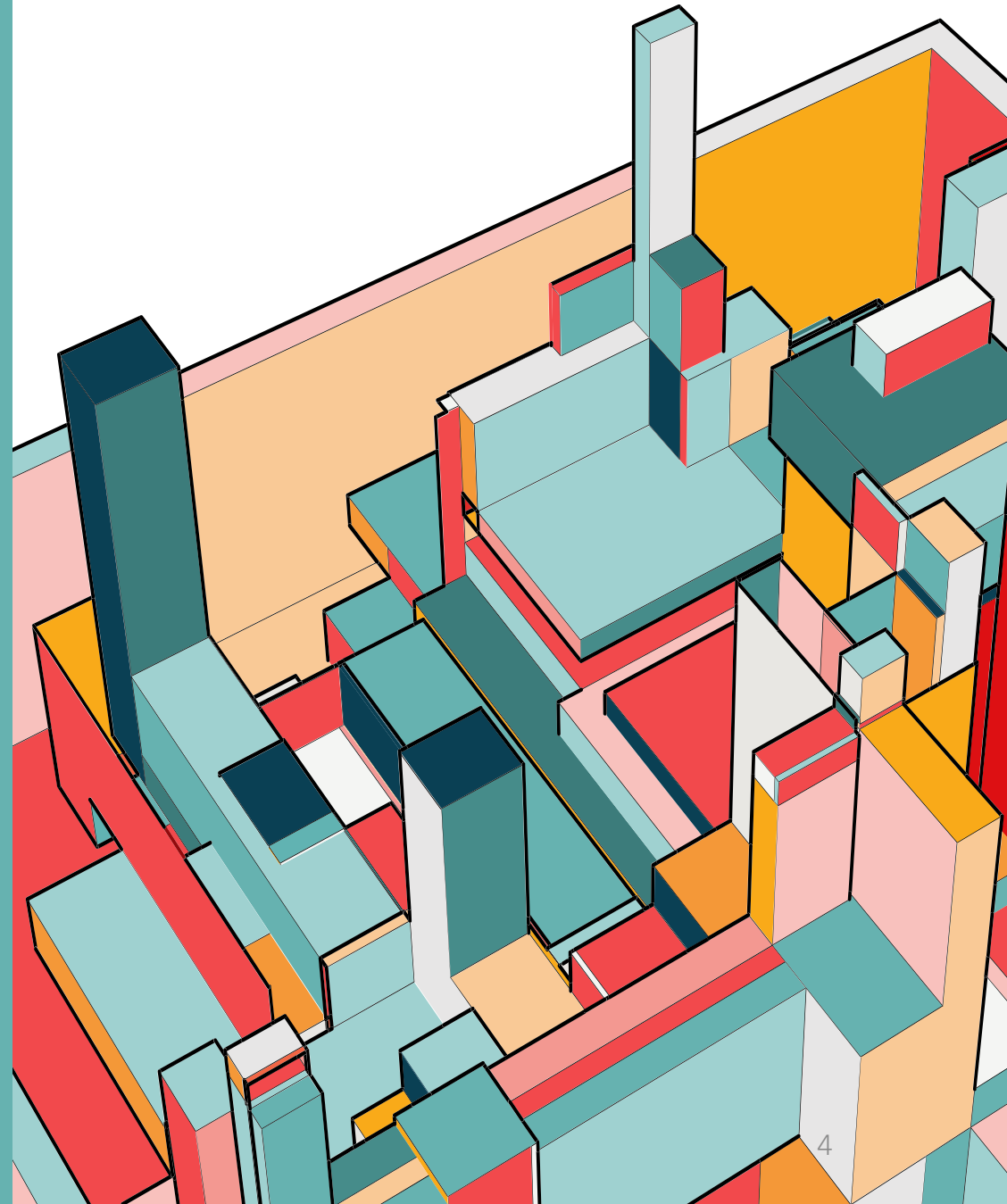


5 YEARS OF DISTRICT GROWTH

- 2018/19 15,924 students
- 2019/20 16,401 students
- 2020/21 16,153 students*
- 2021/22 16,766 students
- 2022/23 18,349 students
- Total growth in 5 years 2,425 new students, **1,549** from last school year. The equivalent of 4 new schools.
- *COVID19

DISTRICT PROJECTIONS

- 2024 18,789 students
- 2025 19,708 students
- 2026 20,503 students
- 2027 21,446 students
- 2028 22,097 students
- Total projected growth in 5 years **3,782** new students based on current % of growth. This would be a maximum growth scenario.



MOST PRESSING ENROLLMENT GROWTH AREAS

Riverview East K-8

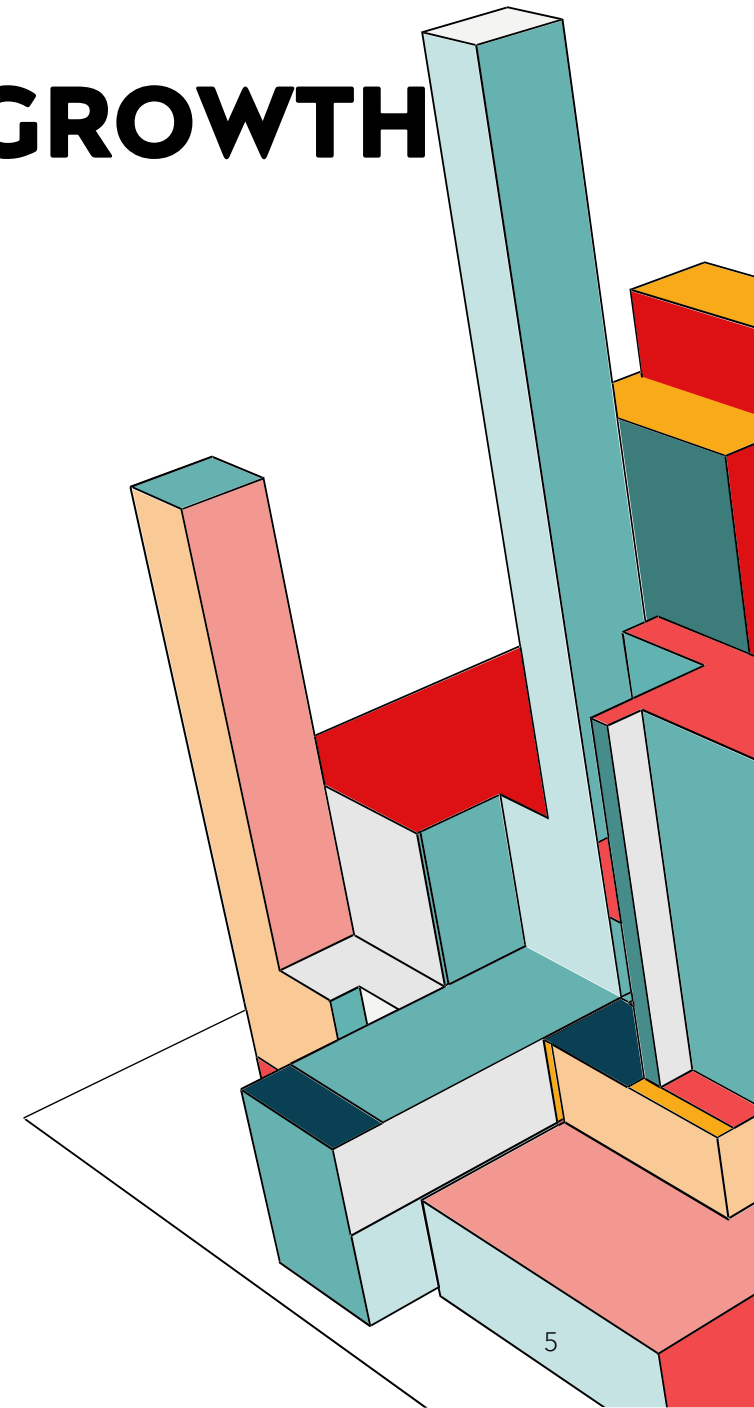
- Current Enrollment **817**
- 2018/19 650
- MAX Capacity 694
- 5-year projection 1317
- 8 portables
- All auxiliary space used as classrooms

MHS 9-12

- Current Enrollment **1424**
- 2018/19 1253
- MAX Capacity 1299
- 5-year projection 1598
- 8 portables/4 more on the way
- All auxiliary space used as classrooms

Shediac Cape K-8

- Enrollment **470**
- 2018/19 310
- MAX Capacity 386
- 5-year projection 627
- 6 portables
- All auxiliary space used as classrooms



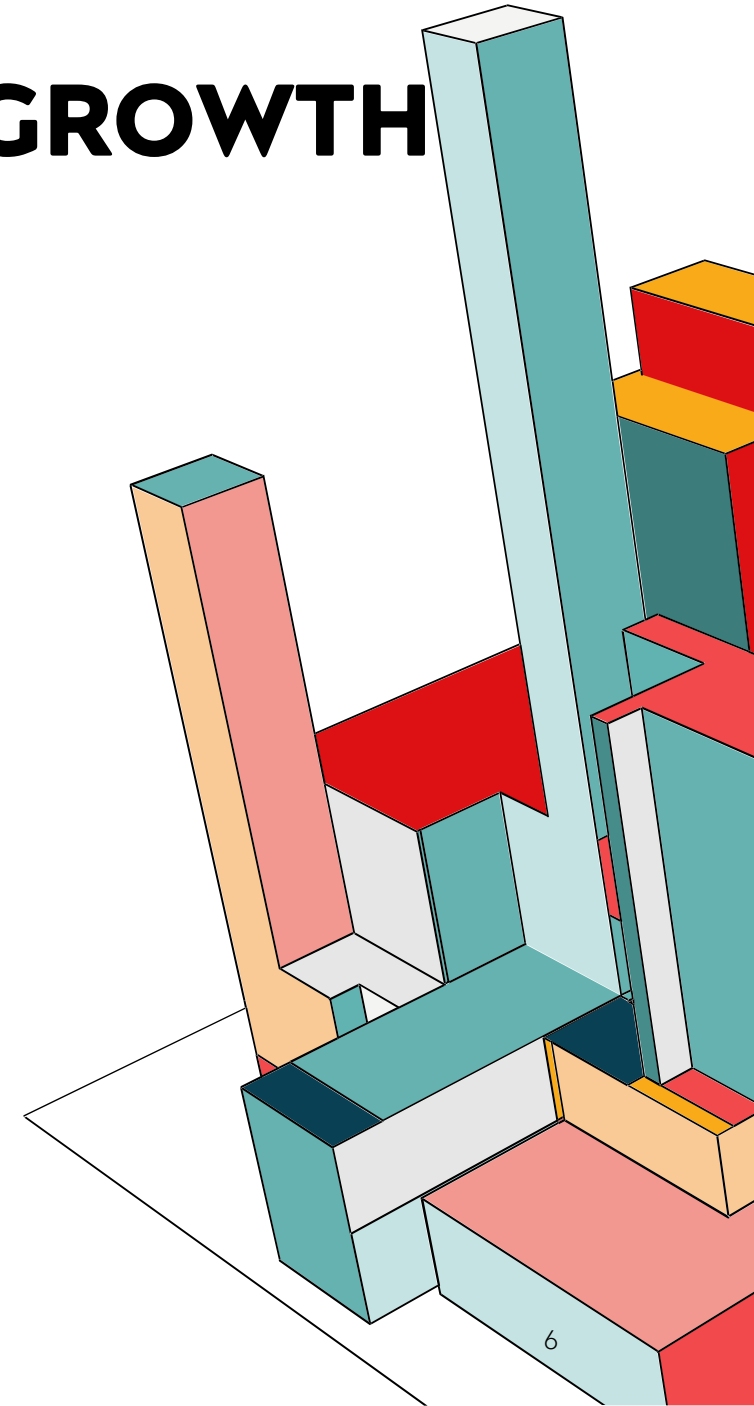
MOST PRESSING ENROLLMENT GROWTH AREAS

Lou MacNarin K-5 (Dieppe)

- Enrollment 709
- 2018/19 420*
- MAX Capacity 629
- 5-year projection 1040
- 4 portables coming this summer
- All auxiliary space used as classrooms
- * Lou M was a K-8, due to Dieppe's growth their apx 300 middle school students now attend Lewisville Middle School

Northrop Frye K-5 (North End)

- Enrollment 771
- 2018/19 821*
- MAX Capacity 694
- 5-year projection 1110
- 6 portables requested
- All auxiliary space used as classrooms
- * Northrop Frye was a K-8 and due to north end growth their apx 300 middle school students now attend Maplehurst Middle School





POSSIBLE GROWTH SOLUTIONS

Boundary Changes

Explore boundary shifts to send students to nearby schools that are not experiencing overcrowding.

Grade Reconfiguration

Change K-8 school to K-5 and move middle school program

New Schools

Major Capital Projects reviewed with new enrollment data

Repurposing Schools/Other

RIVERVIEW EAST

Grade Reconfiguration 2023

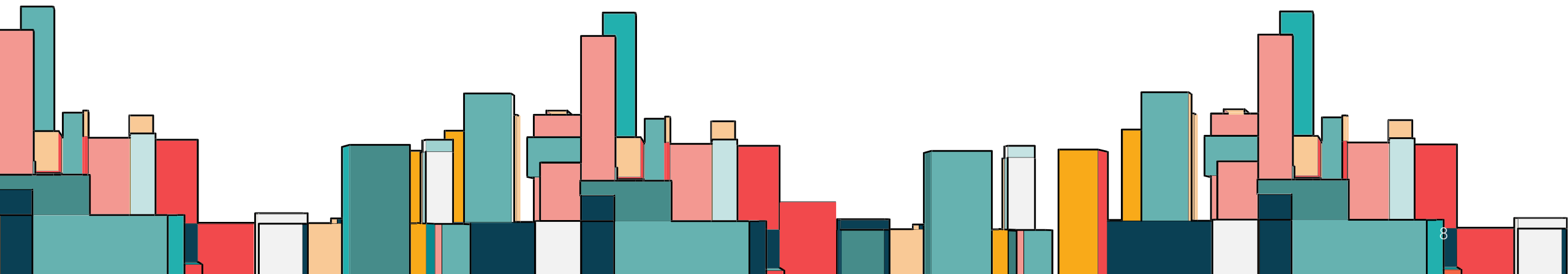
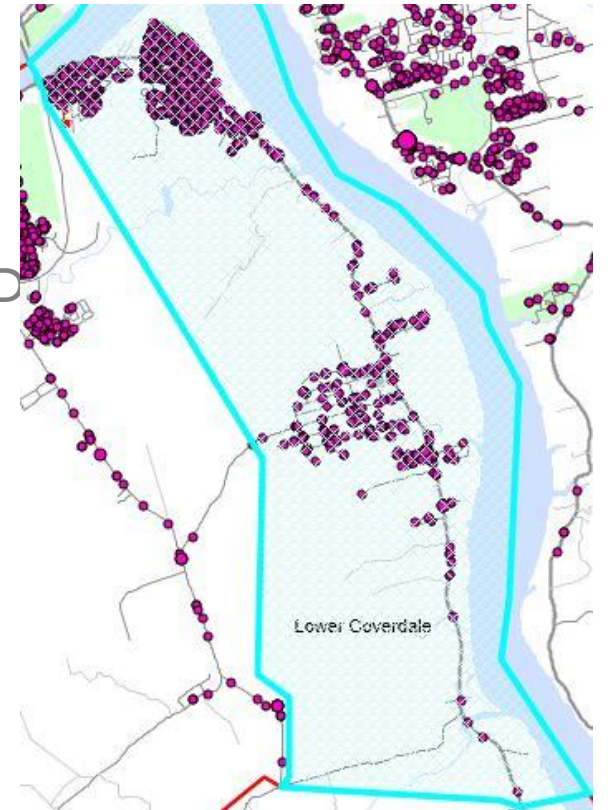
6-8 grades move to Riverview Middle School

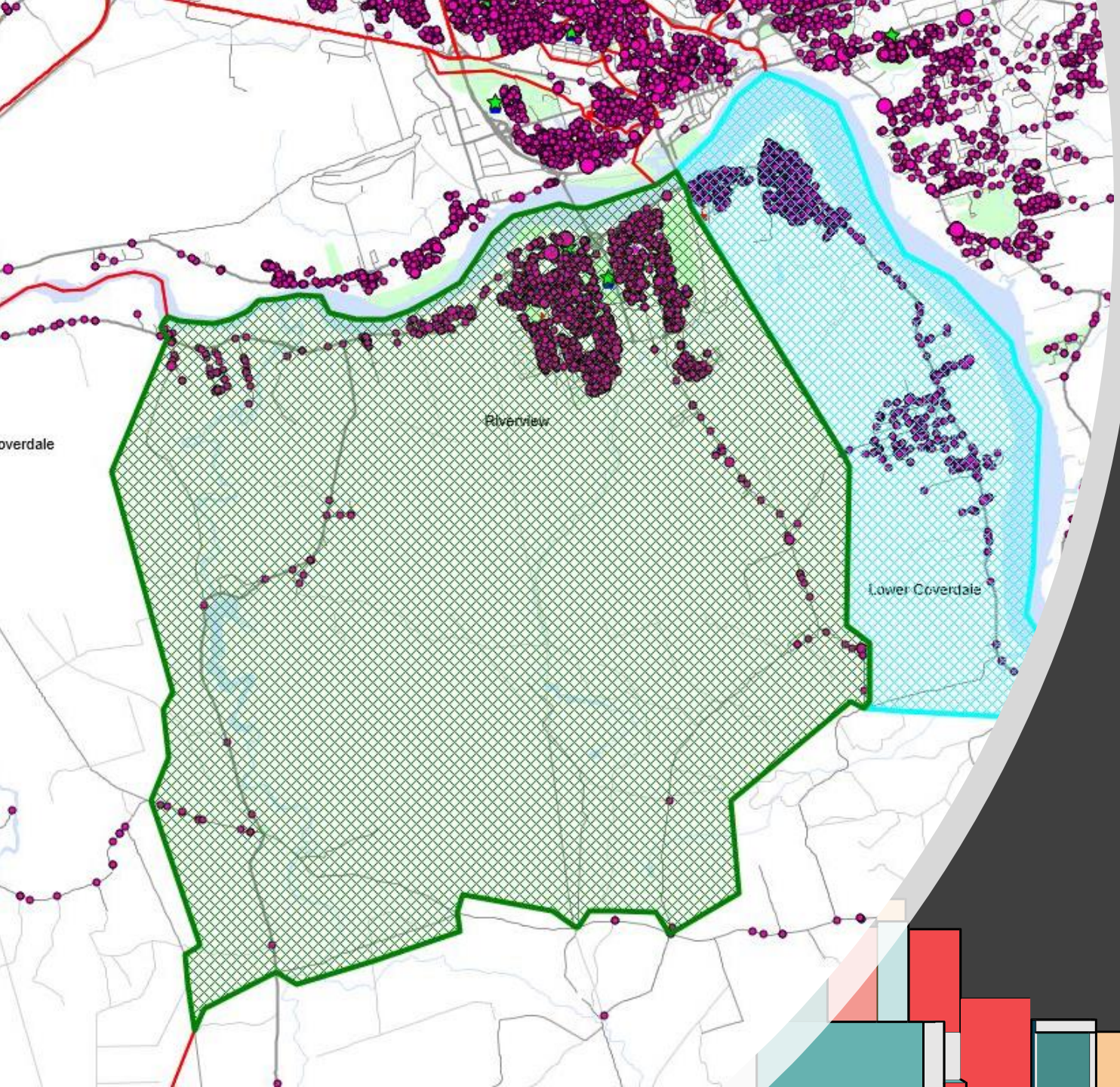
Boundary Change 1 TBD

Lower Coverdale to Hillsborough Elementary

Boundary Change 2 TBD

Bridgedale to Hillsborough





GRADE RECONFIGURATION 2023

RES GRADES 6-8(289) MOVE TO RMS

RMS BECOMES (776) CAPACITY IS 941

RES BECOMES (528)



RIVERVIEW EAST

Boundary change to Town Limit. RES to HES and CRS

K-5 = 123 students

6-8 = 63 students

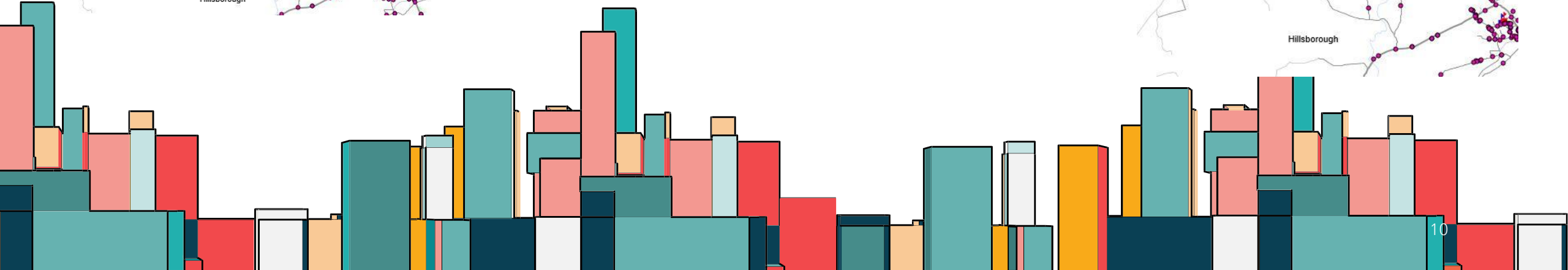
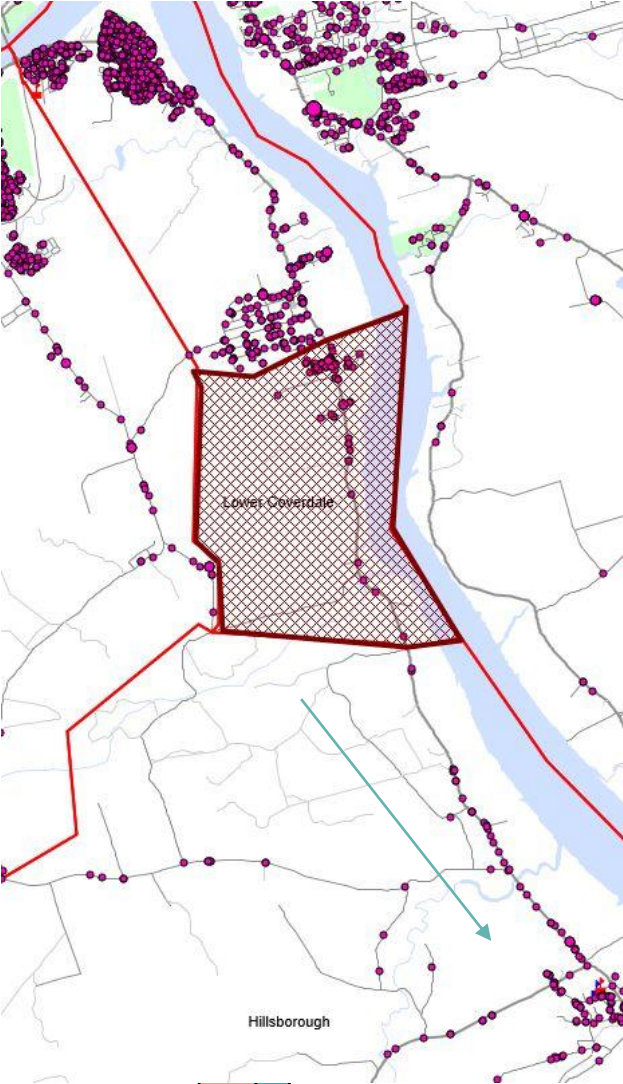
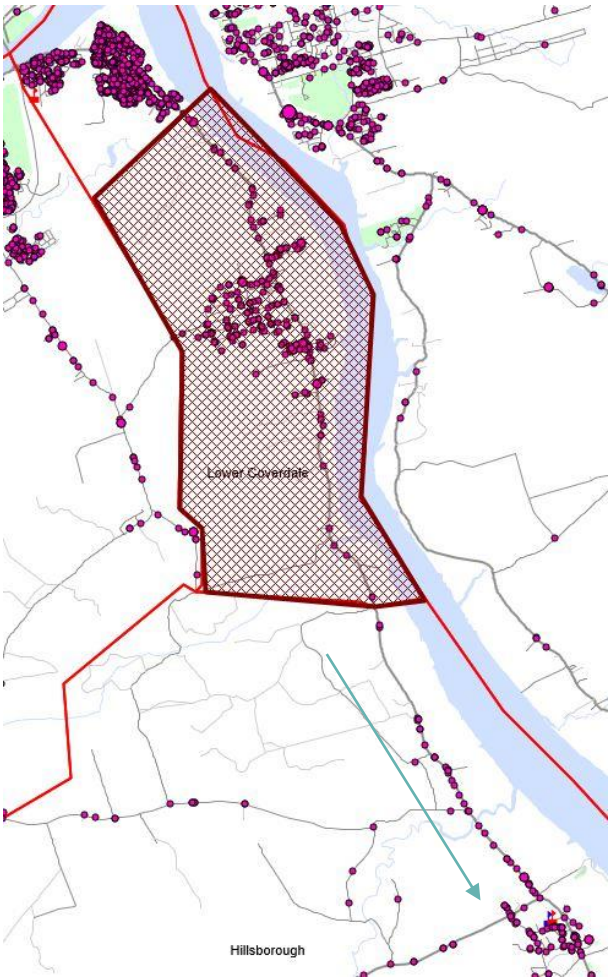
RES 631

Boundary change to Manor Ridge Rd. RES to HES and CRS

K-5 = 27 students

6-8 = 21 students

RES 769



SHEDIAC CAPE

Grade Reconfiguration/New School 26/27

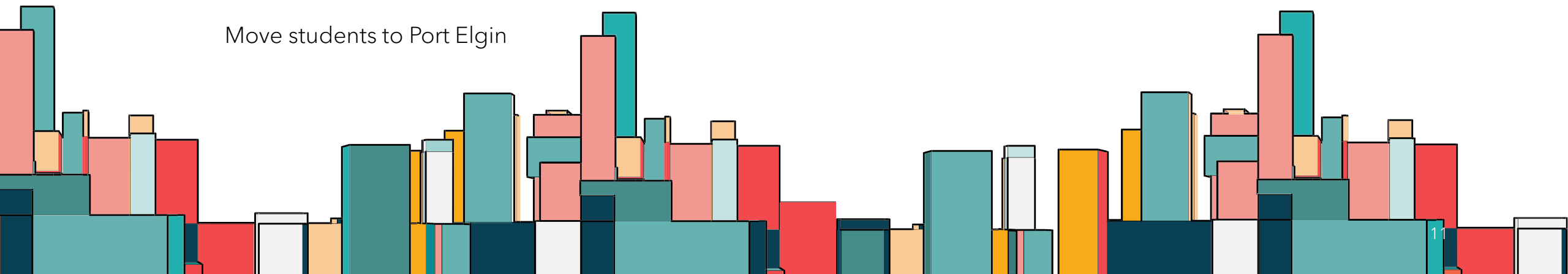
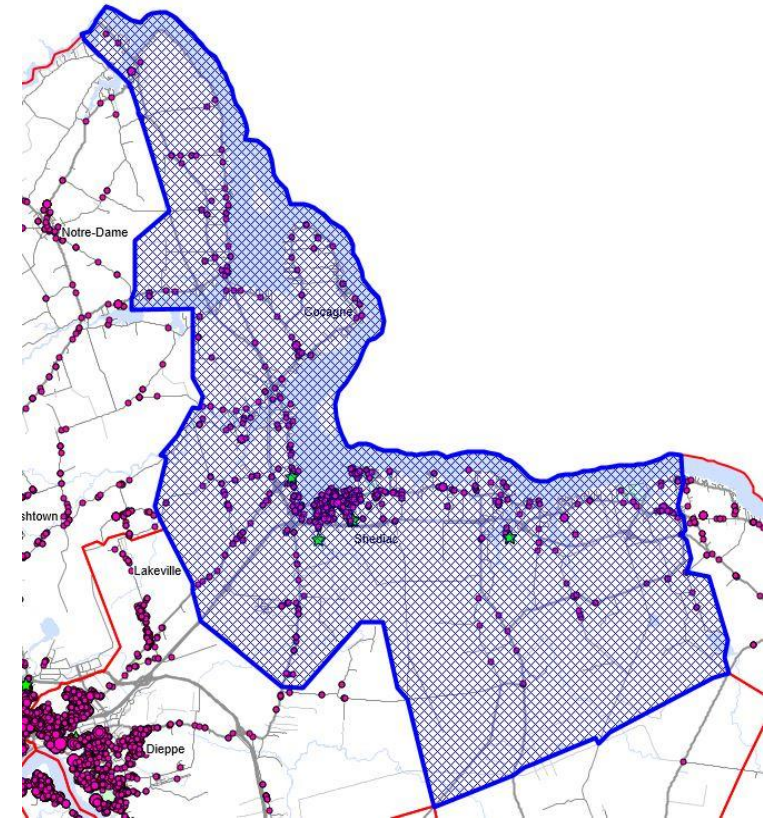
K-12 Anglophone school in Shediac

Boundary Change 1 TBD

Move Students to Port Elgin

Boundary Change 2 TBD

Move students to Port Elgin



SHEDIAC CAPE - NEW K-12

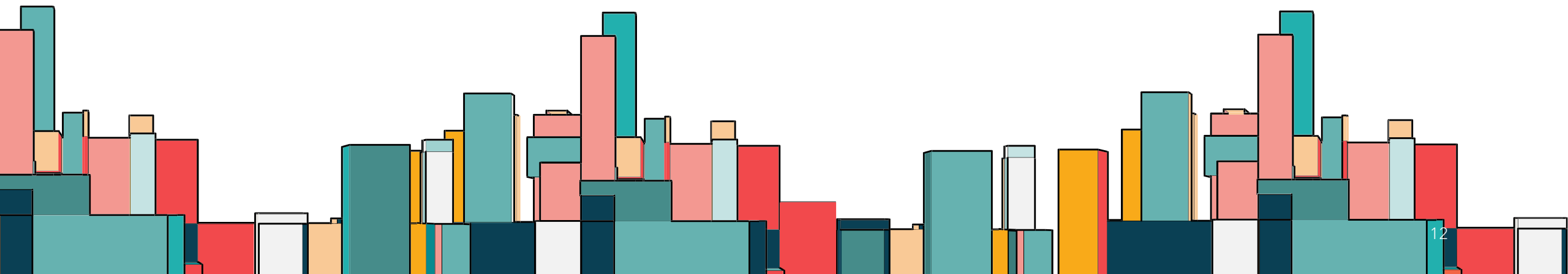
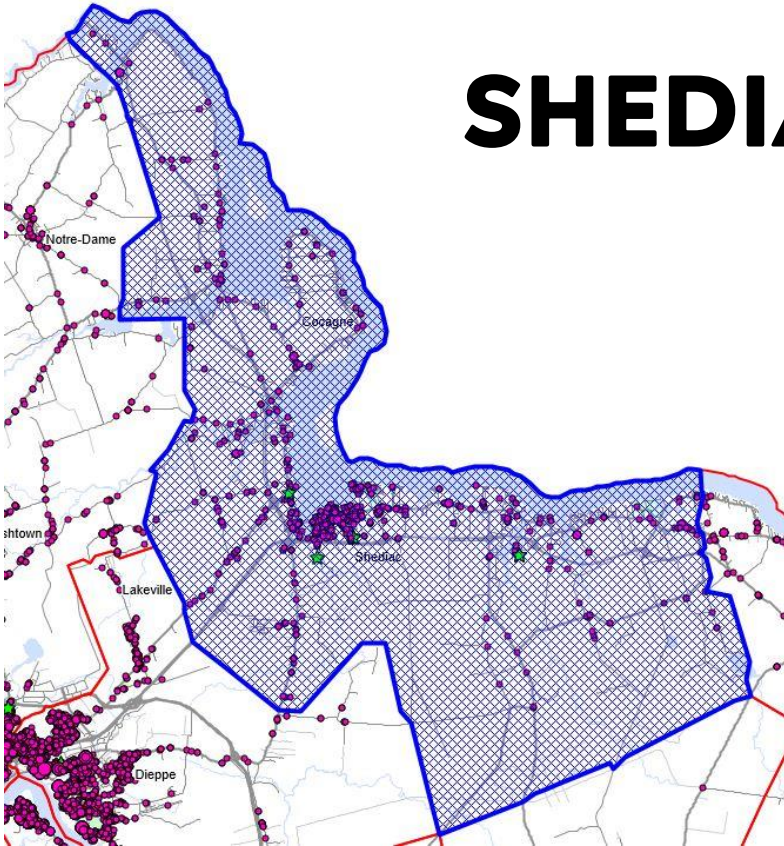
K - 5 = 308

6 - 8 = 148

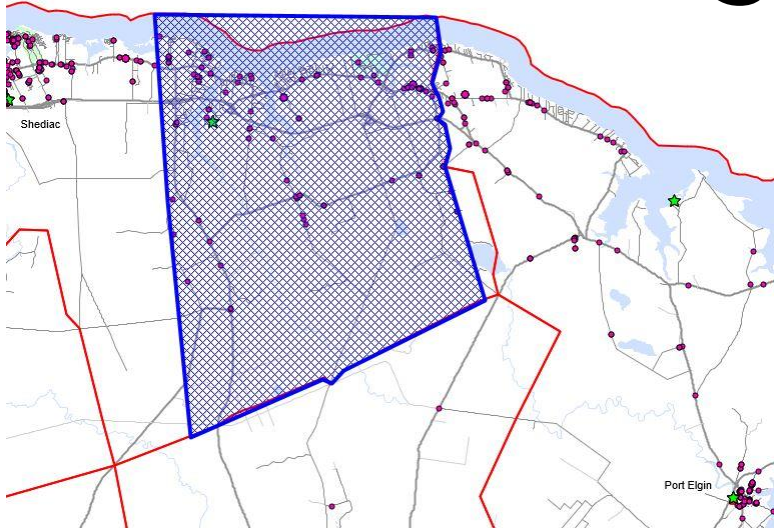
HIGH SCHOOL = 219

NEW K - 12 SCHOOL OF 675 STUDENTS

REDUCING MHS BY (219)



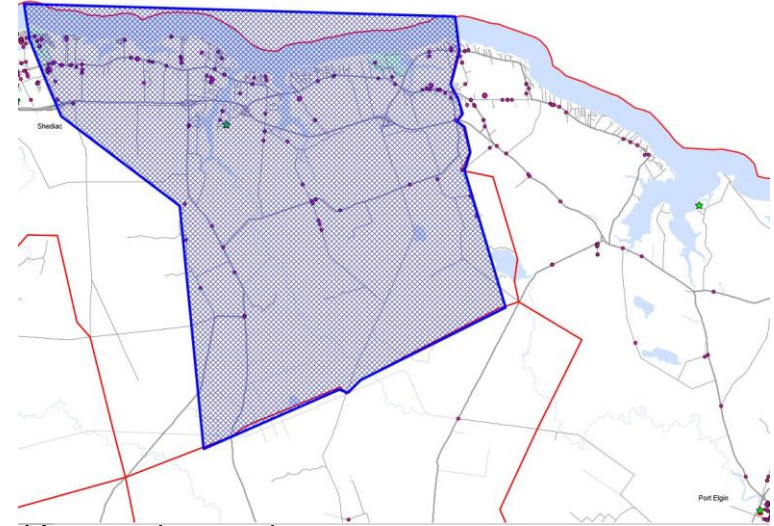
SHEDIAC CAPE



Boundary change
to Rt 933. SC and
PERS

K-5 = 42 students
6-8 = 21 students

SC 407



Boundary change
to Pointe du chene
Rd. SC and PERS

K-5 = 70 students
6-8 = 30 students

SC 370

LOU MACNARIN

Grade Reconfiguration/New School TBD

6 - 12 Anglophone School in Dieppe

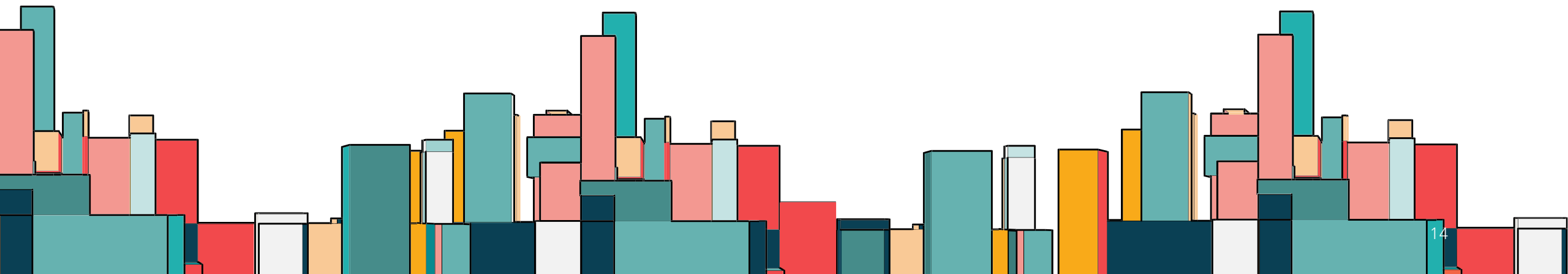
Boundary Change 2 TBD

K-5 Little Dover Rd to Dorchester

Boundary Change 1 TBD

K-5 Dover Rd to Dorchester

Overflow to EC TBD



LOU MACNARIN

New 6 - 12 school in Dieppe

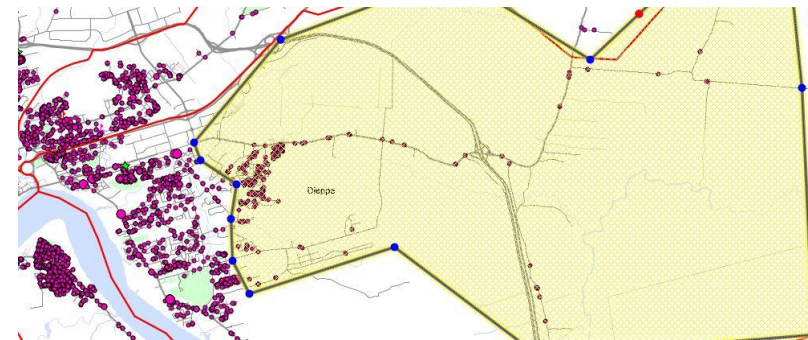
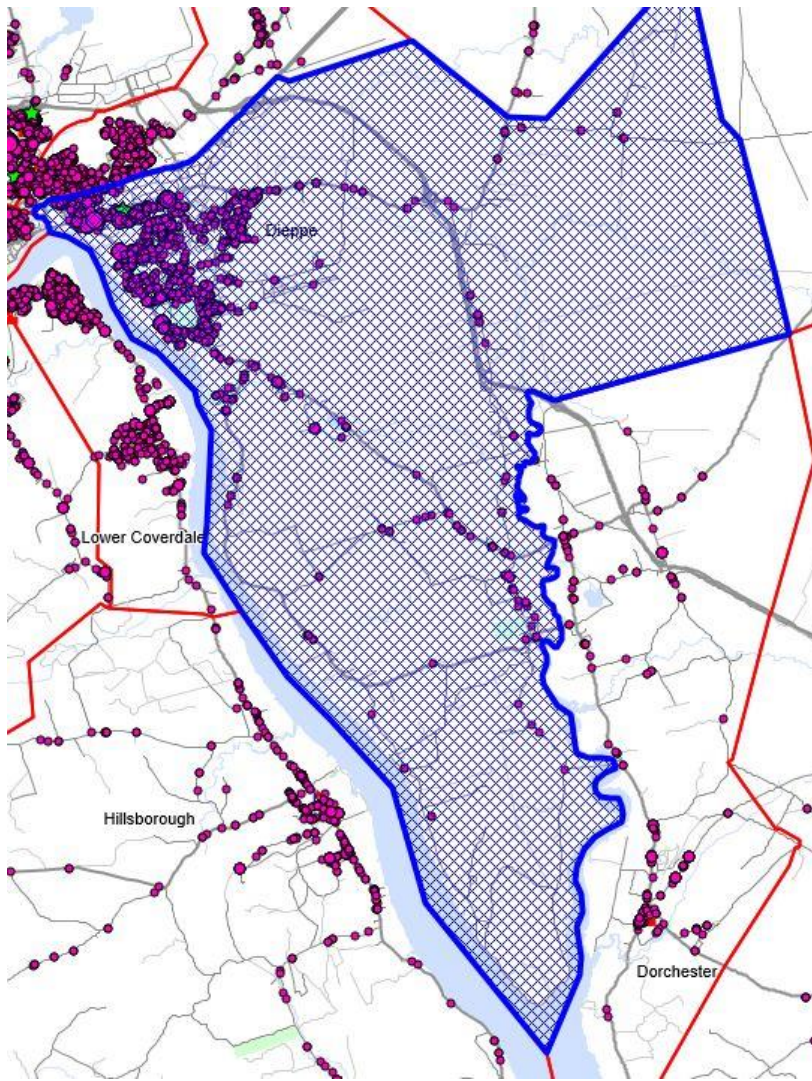
6 - 8 = 300

9 - 12 = 419

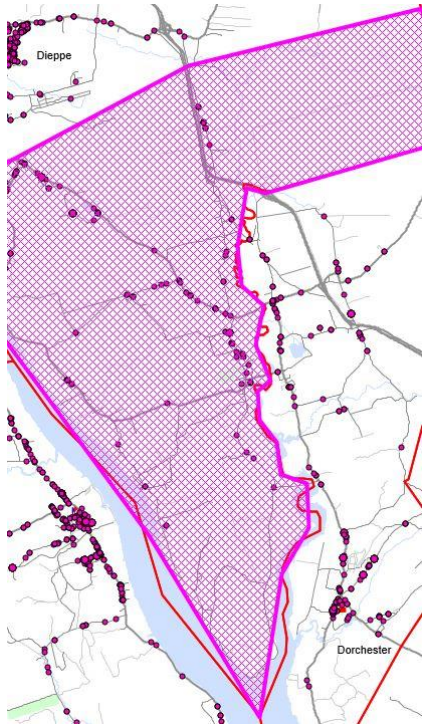
New school for 719 students

MHS reduced by (419)

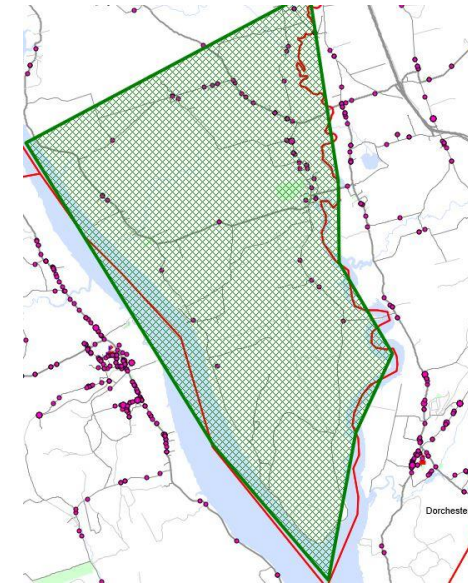
Lewisville Middle becomes K-8
and boundary changed to
include 105 K-5 LMS students



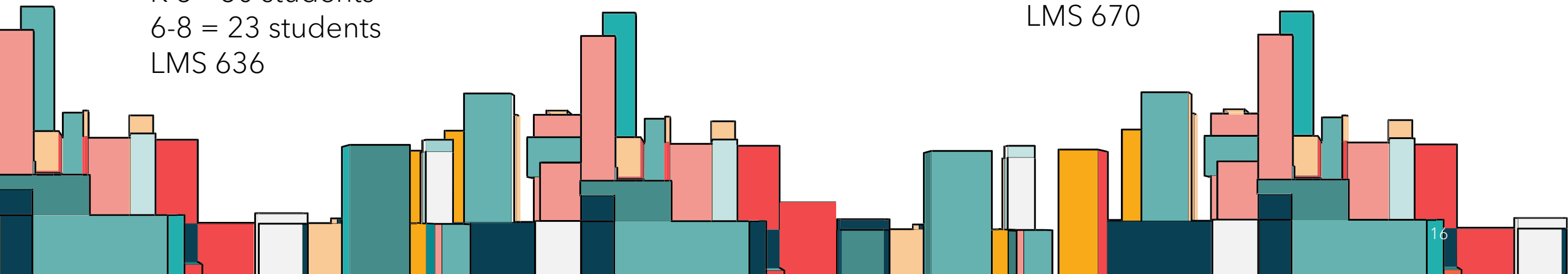
LOU MACNARIN



Boundary change large. LM to DCS -
Dover Rd.
K-5 = 50 students
6-8 = 23 students
LMS 636



Boundary change small. LM and DCS -
Little Dover Rd
K-5 = 27 students
6-8 = 12 students
LMS 670



MONCTON HIGH

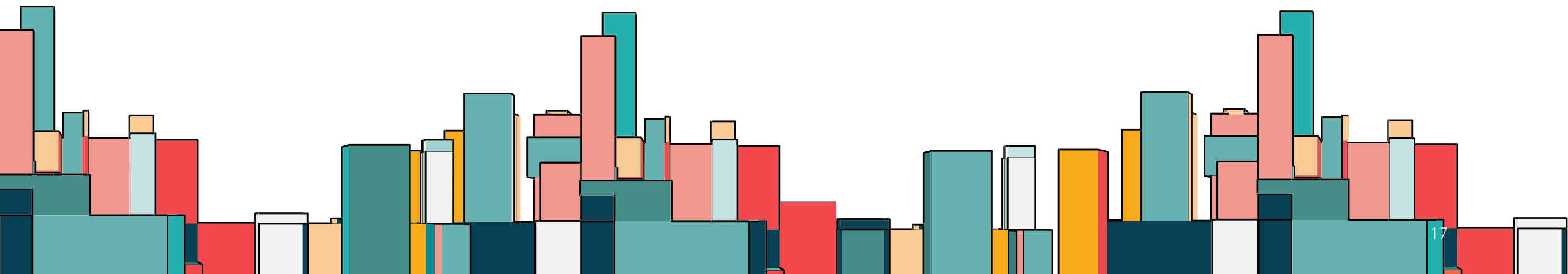
New K – 12 Shediac Cape 26/27

Removes 214 students from MHS – 61,44,64,45
MHS 1210

New 6 - 12 Dieppe TBD

Removes 419 students from MHS – 103,106,132,72
MHS 1005

With both new schools MHS would have a
population of 791.
Leaving room for a balancing of boundaries with
HTHS and BMHS



NORTH END

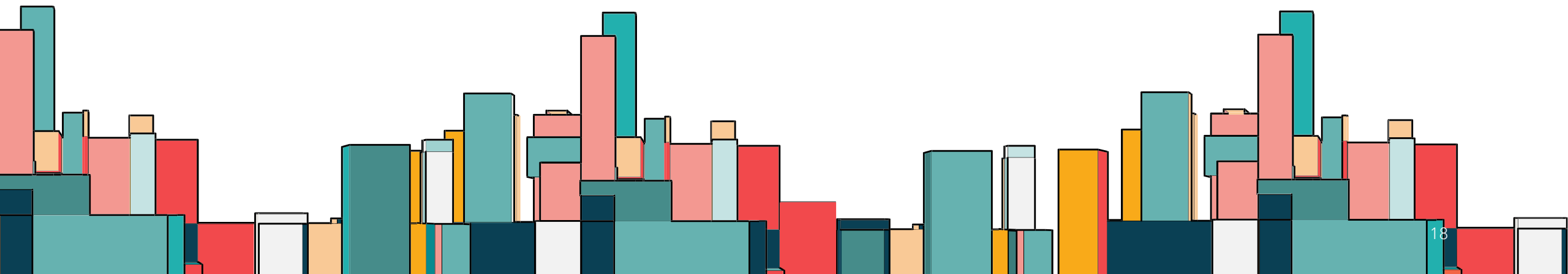
Grade Reconfiguration 09/24 or new school opening date

Evergreen remains a K - 5
Maplehurst becomes K - 8
Northrop Frye becomes K - 8

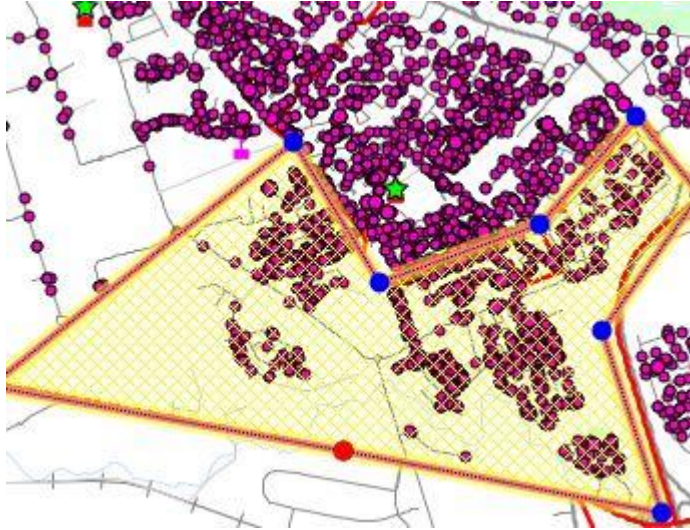
Boundary Change 09/24 or new school opening date

Divide the Northrop Frye boundary in two for NFS and Maplehurst.

Request Bessborough and Hillcrest 09/24 or new school opening date



NORTH END



Maplehurst becomes K - 8
Boundary east and south
of Maplehurst school.

K-5 = 398

6-8 = 230

Students continue to
HTHS

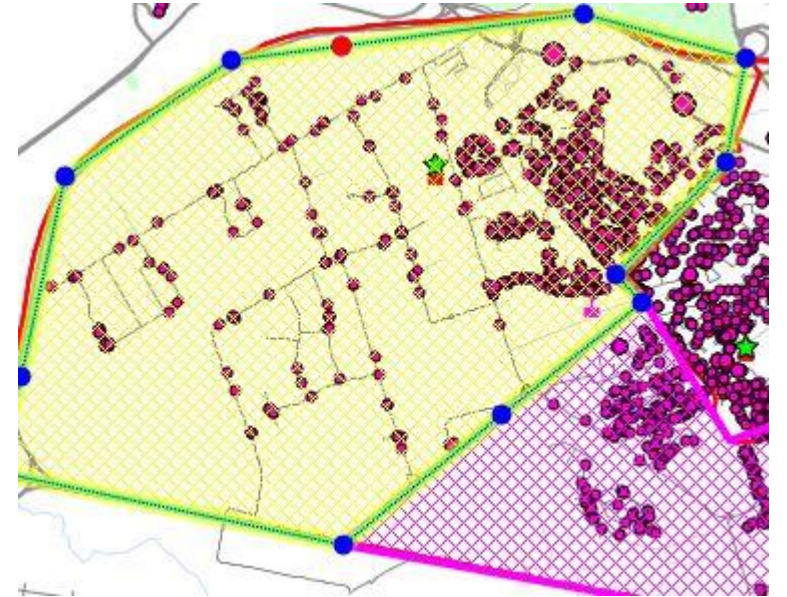
Total = 628

Current 744

Evergreen Park stays K - 5
Middle School students will go
to new Middle School = 319.

Students continue to BMHS

Total K-5 = 609



Northrop Frye becomes K - 8
Boundary west and north of
Maplehurst school.

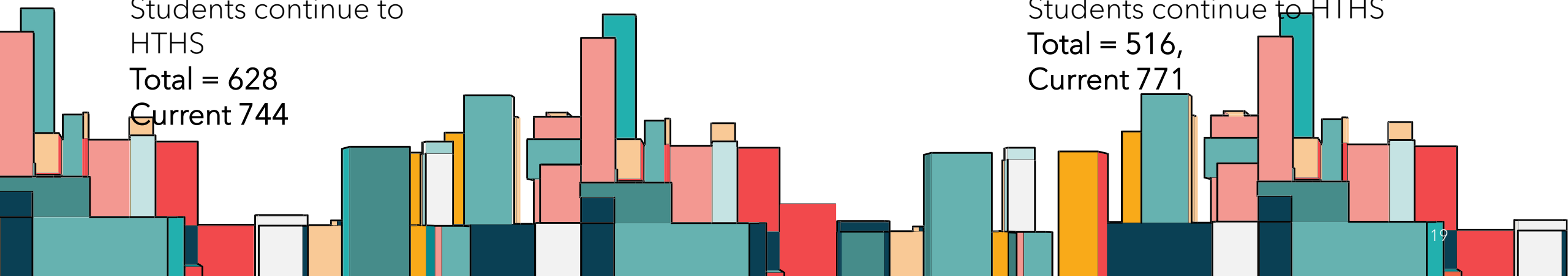
K-5 = 339

6-8 = 177

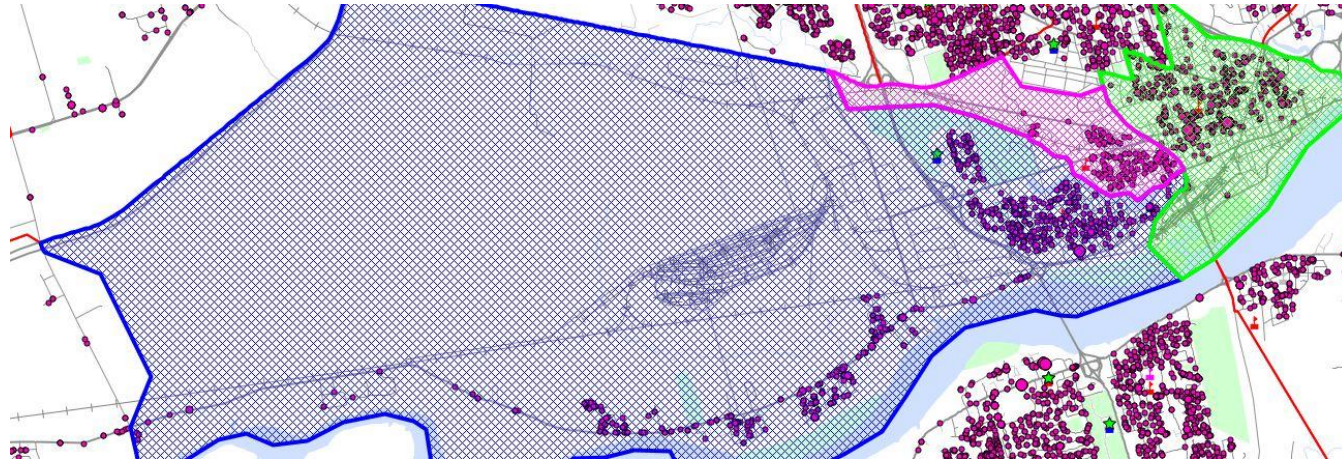
Students continue to HTHS

Total = 516,

Current 771



NEW SCHOOL AT BMHS BECOMES A MIDDLE SCHOOL. BESSBOROUGH REMAINS OPEN AS A K-5 – 09/24 OR OPENING OF NEW SCHOOL



New Middle School Catchment

Bessborough = 199

Hillcrest = 47

Edith Cavell = 94

Evergreen Park = 319

Total Students = **659**

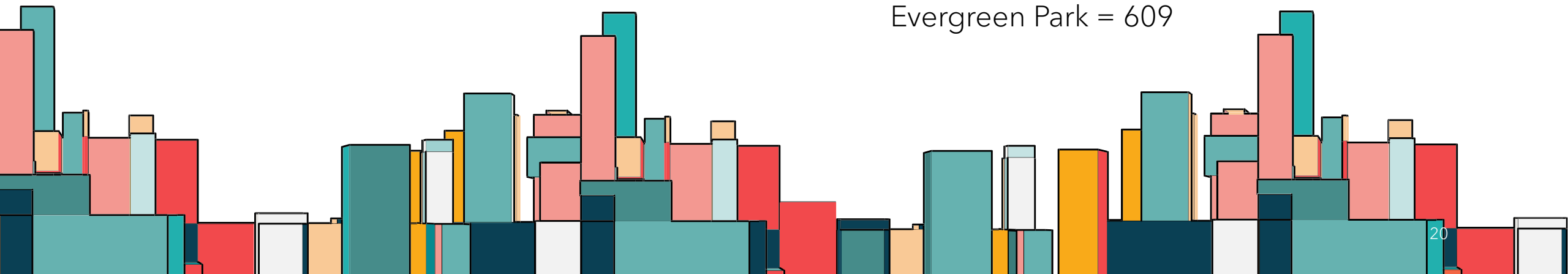
Students continue to BMHS

K- 5 Schools

Bess = 417

Edith Cavell = 217

Evergreen Park = 609



THANK YOU

Randolph MacLEAN

Superintendent/CEO AESD

506 856-3222